

NORTH LUFKIN COMMUNITY CENTER



APPRECIATIVE INQUIRY

“Our community must work together for our children’s future. We want to build a neighborhood center so that people can come to Wards 1 and 2 for the services they need. We want our voices to be heard. We live, eat, and breathe community change.”

- **Ms. Cynthia Davis**
Liaison Community Volunteers & Residents

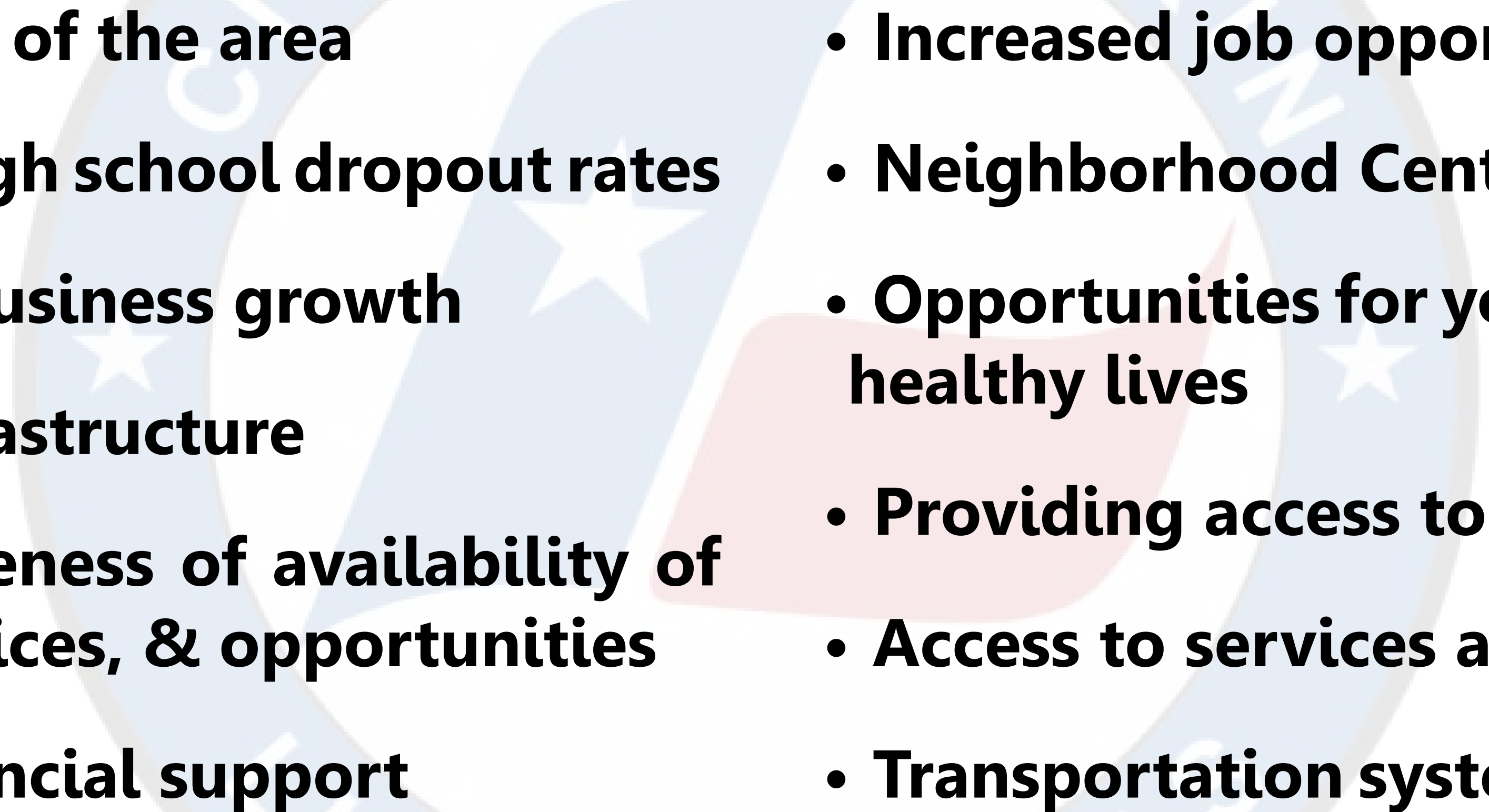
“The community as a whole should work together to help build the community up. We have all these organizations, but it takes a village to work together. The vision is out there and you put the inquiry out there and we know what is out there, so now we have to work together.”

- **Ms. Ester Mills**
Angelina Country Citizens Chamber of Commerce, Officer & Board Member

“A holistic approach to address core needs of the community is important. We need buy-in from the community. It is important to ask the question of who will benefit from the change. People have to stay engaged and it must be guided by the community. People will do what is important to them. We need to decide what had to be in place to sustain community revitalization project.”

- **County Judge Wes Suiter**
Angelina County, Texas

VISION FOR NORTH LUFKIN

- 
- Beautification of the area
 - Decrease in high school dropout rates
 - Economic & business growth
 - Improved Infrastructure
 - Increase awareness of availability of resources, services, & opportunities
 - Increased financial support
 - Increased job opportunities
 - Neighborhood Center
 - Opportunities for young people to live healthy lives
 - Providing access to higher education
 - Access to services and resources
 - Transportation system accessible to all



Sayers St

Milk St

PROJECT
SITE



Preliminary Master Plan

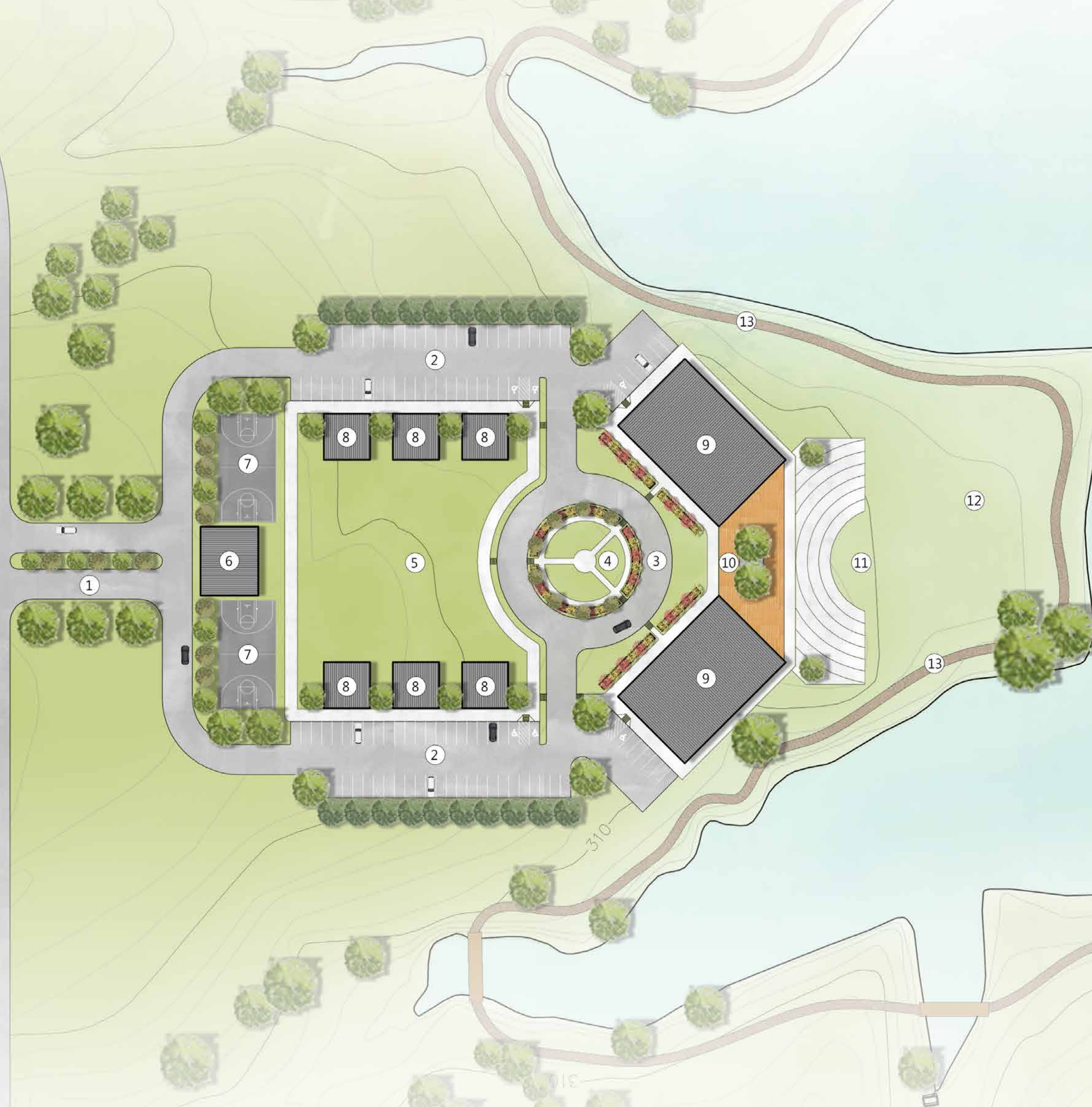
NORTH LUFKIN
NEIGHBORHOOD MASTER
PLAN AND COMMUNITY
CENTER



- Residential**
- Single Family (low density)
 - Single Family (medium-high density)
 - Multi-family (condos, apartments, duplexes)
 - Pocket Neighborhood (mixed density)
- Commercial & Mixed Use**
- 1 Retails
 - 2 Restaurants
 - 3 Restaurants (with residential units above)
 - 4 Cafes/bakeries/etc. (with residential units above)
 - 5 Grocery & Pharmacy
- Institutional & Service**
- 1 Community Center
 - 2 Clinic
 - 3 Beauty Care & Health Care
 - 4 Senior Day Care
 - 5 Children Day Care
 - 6 Police Substation
 - 7 Offices
 - 8 Gas Station
- Recreational**
- 1 Sports Fields
 - 2 Restroom & Locker
 - 3 Sports Courts & Swimming Facility
 - 4 Lakefront Park
 - 5 Intergenerational Park
 - 6 Pocket Gardens
- Industry**
- 1 Light Industry
- Access**
- ▲ Main Entrance
 - △ Secondary Entrance
 - ▲ Pedestrian Entrance
- Existing & Preserved**
- Preserved Woodland
- Floodplain**
- Floodway
 - 100-Year Floodplain

LEGEND

- 1 ENTRY DRIVE
- 2 PARKING
- 3 CIRCLE DRIVE
- 4 ENTRY PLAZA
- 5 PARK
- 6 PAVILLION W/ RESTROOM
- 7 BASKETBALL COURT
- 8 PAVILLION
- 9 COMMUNITY CENTER
- 10 CONNECTING BRIDGE
- 11 AMPHITHEATER
- 12 LAKEFRONT PARK
- 13 HIKING TRAIL





NORTH LUFKIN COMMUNITY CENTER



COMMUNITY "FRONT YARD"





COMMUNITY "FRONT YARD"

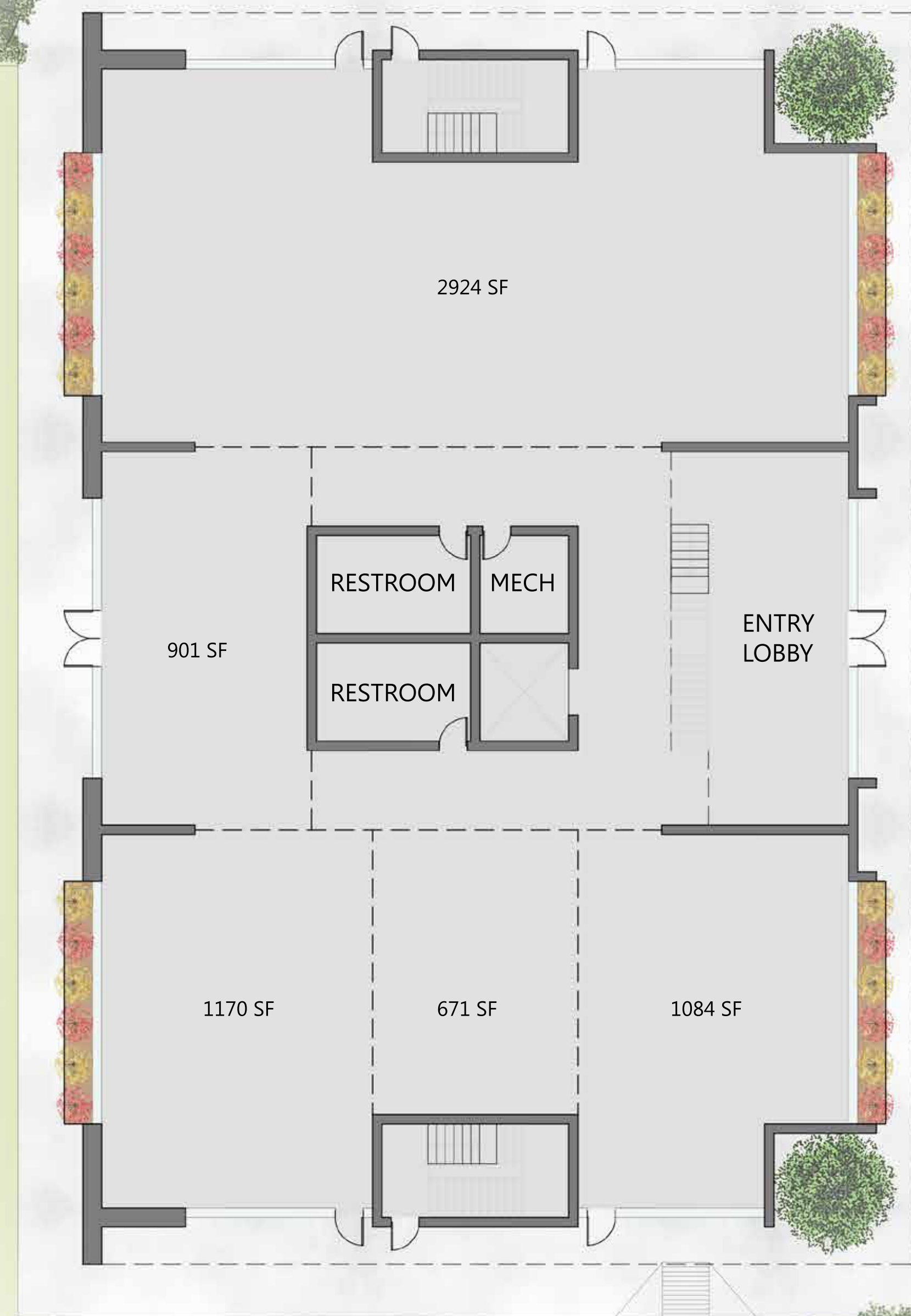




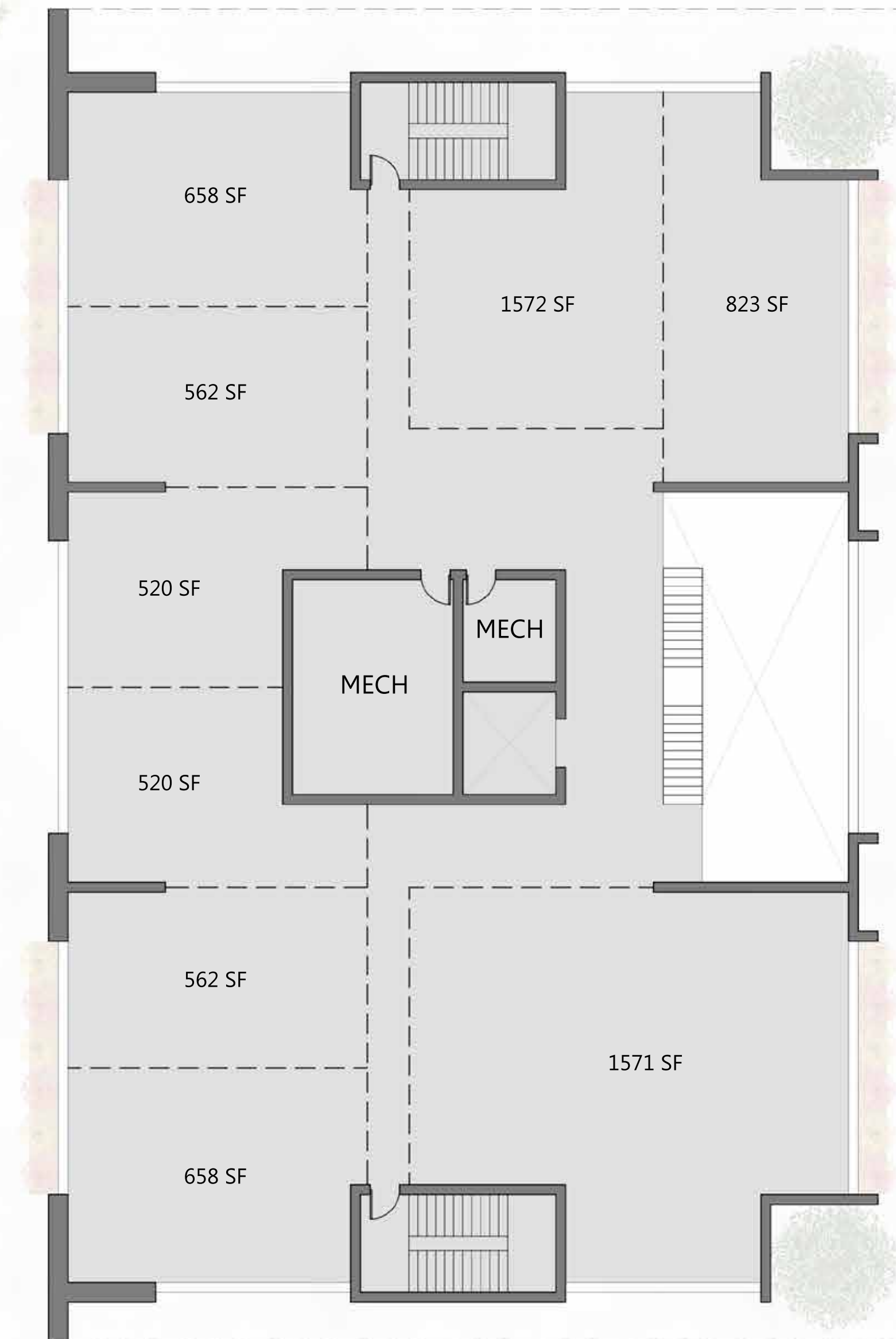
COMMUNITY "HOUSE"



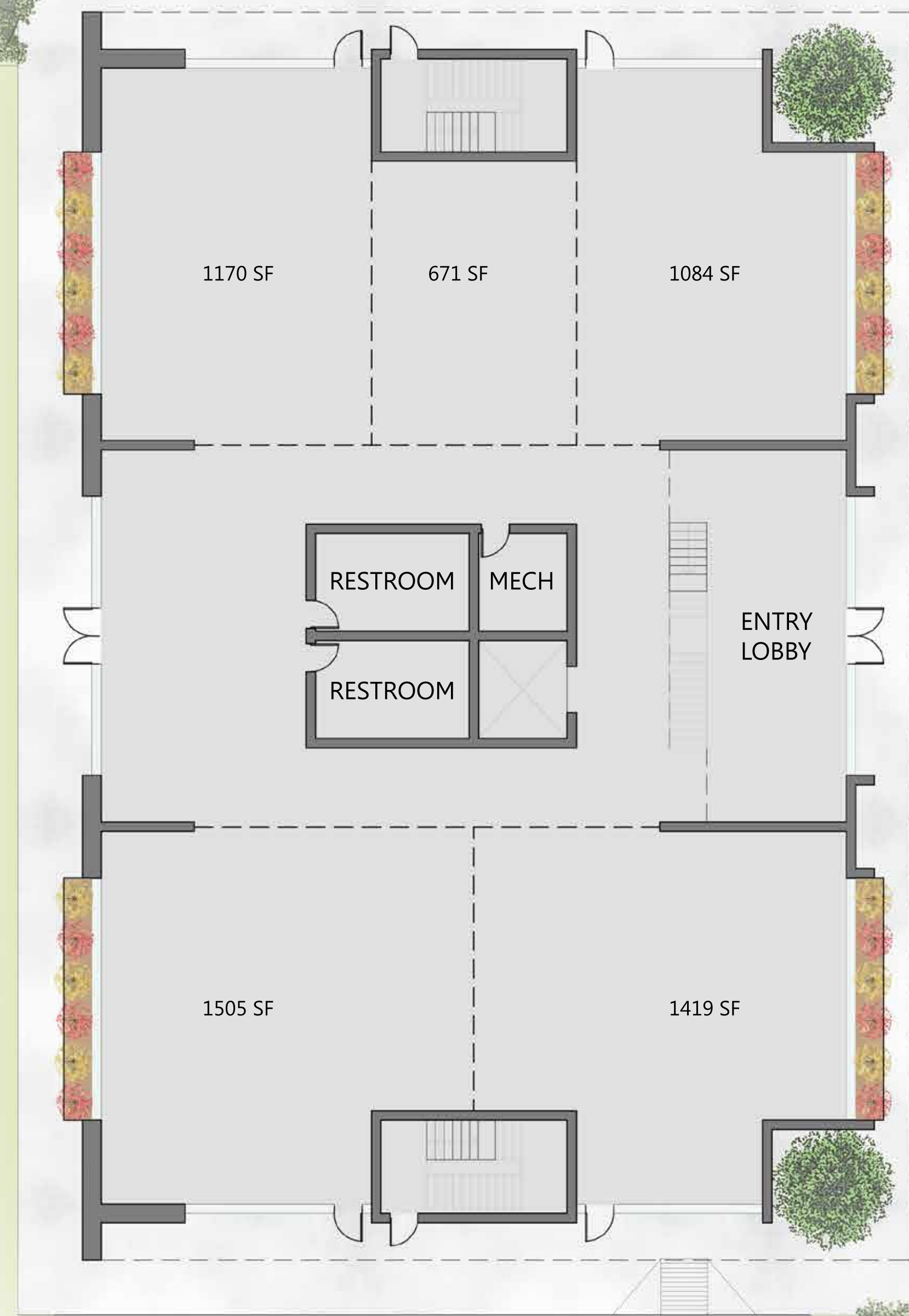
COMMUNITY "BACK YARD"



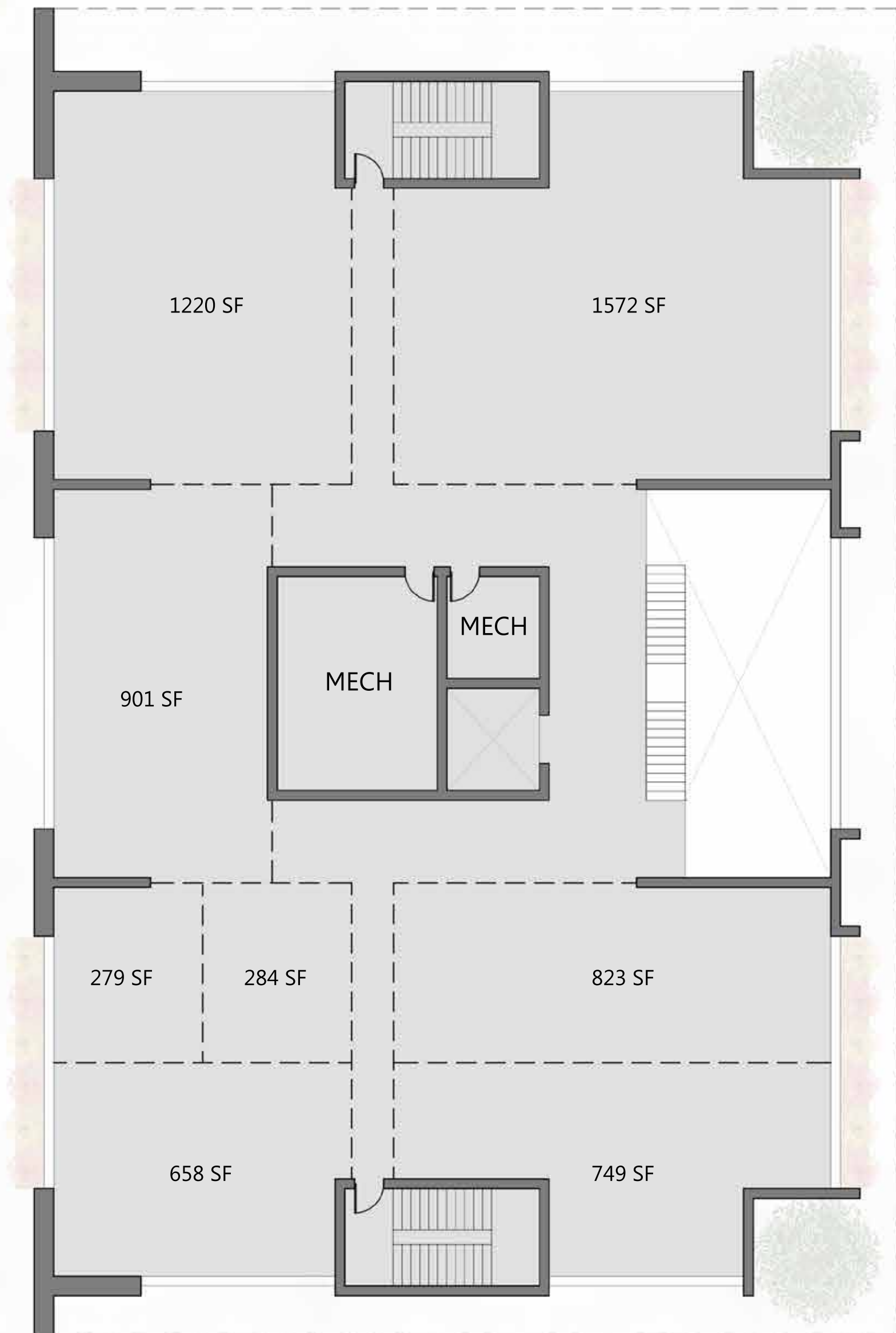
FIRST FLOOR PLAN
APPROX. 9,500 SF



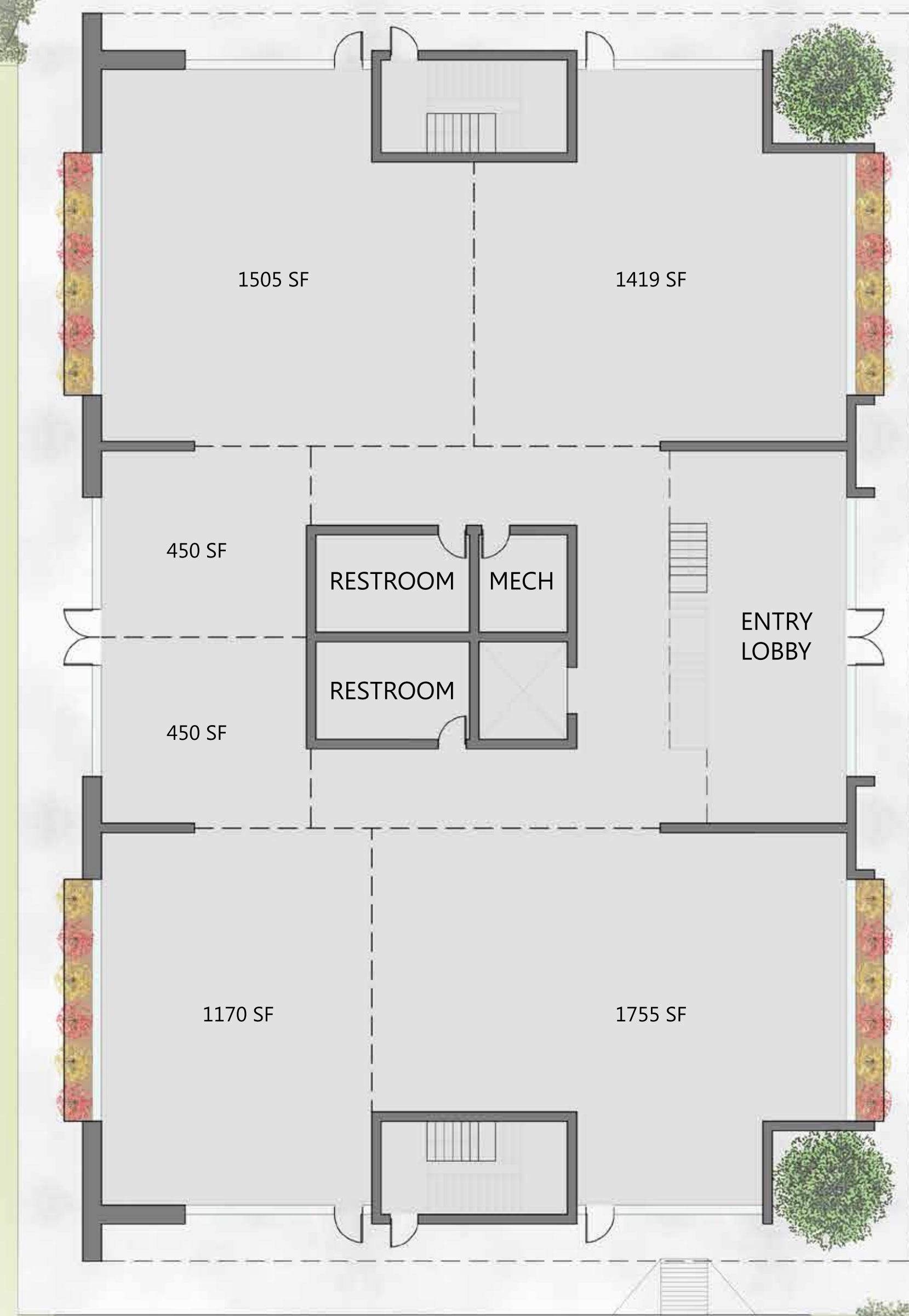
SECOND FLOOR PLAN
APPROX. 8,800 SF



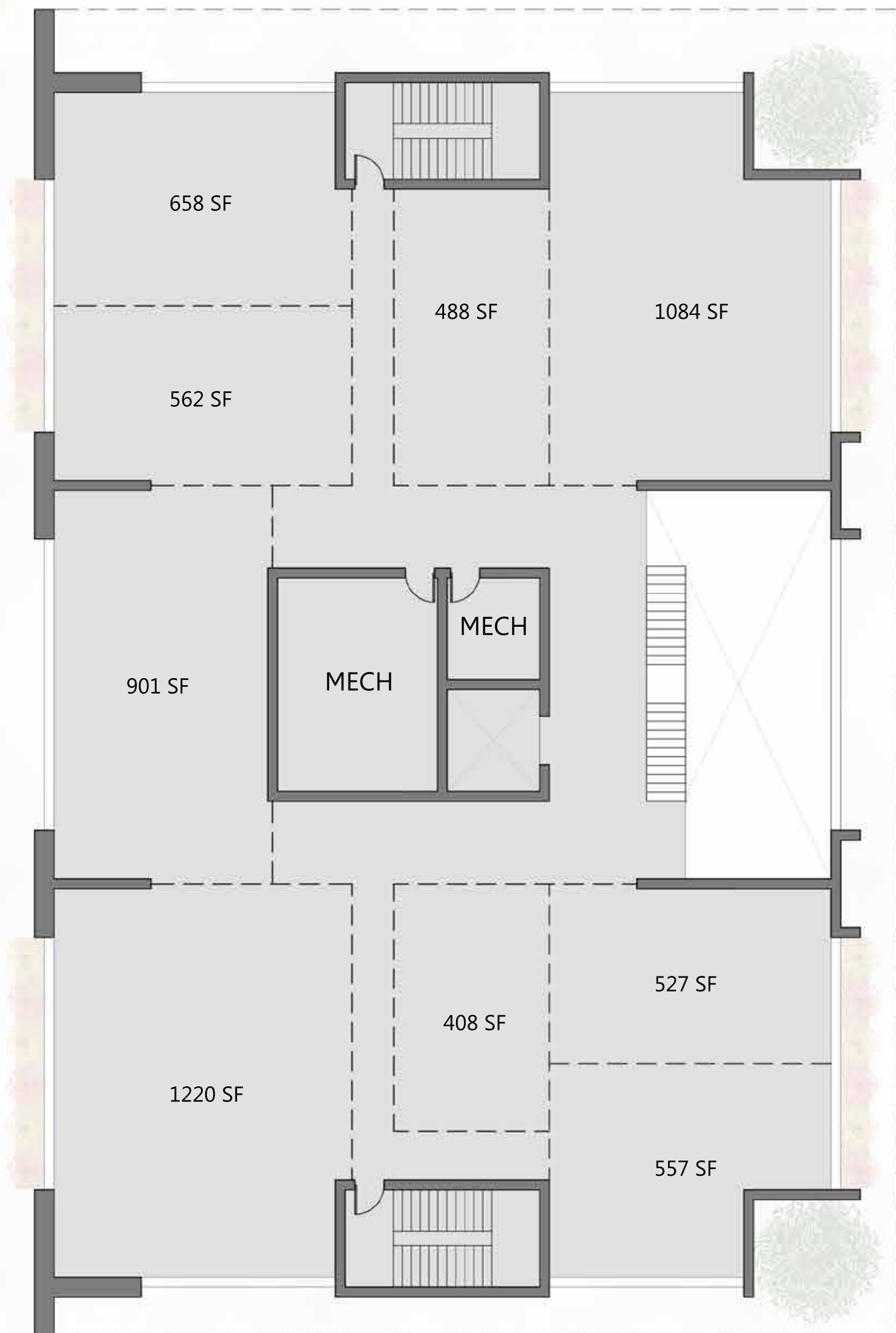
FIRST FLOOR PLAN
APPROX. 9,500 SF



SECOND FLOOR PLAN
APPROX. 8,800 SF



FIRST FLOOR PLAN
APROX. 9,500 SF



SECOND FLOOR PLAN
APPROX. 8,800 SF

NORTH LUFKIN COMMUNITY CENTER

